



Spring/Summer 2026 Newsletter

# Gem County Rod and Gun Club

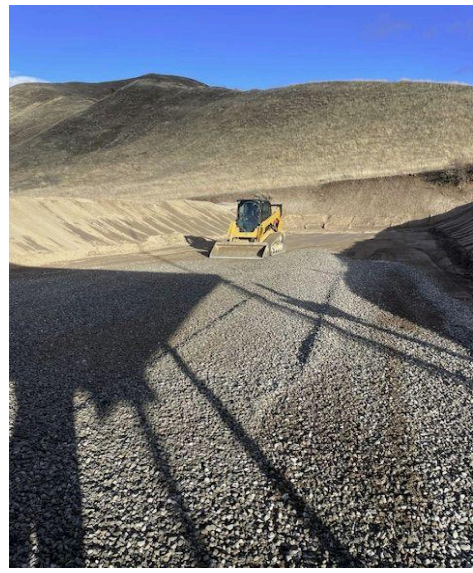
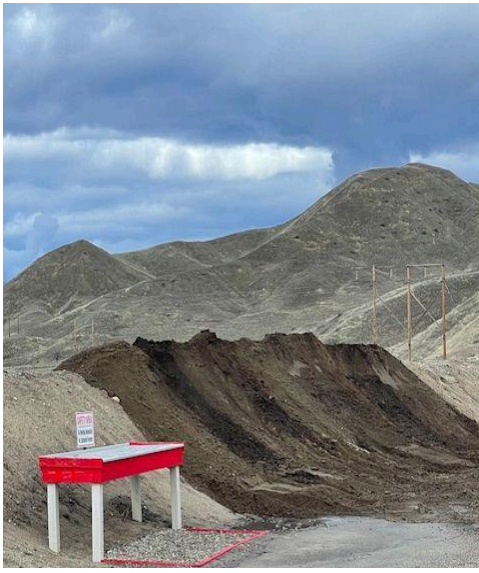
May 2026

---



Our mild winter made it much easier to get some of our range projects completed. Most notably is the new electric gate operator. This was a pretty extensive project that required new electrical being run, conduit buried for the power and security cameras. It took a little longer than planned but the gate went live in early March and has been working great. The Steel Challenge shooters came out to help clear trenches, install all the conduit, and helped get the trenches filled back in so the range remained accessible to members. Huge Thank You to Don H for pulling our electrical permit and making sure we passed inspection.





In February, we were able to bring in a skid steer and restore our pistol berms. Years of rain and wind had caused the berms to slough off and lose some height and width. They spent a full day grooming the berms, it was long overdue and enhanced safety by restoring the height. During the process we brought in some crushed rock making all 5 pistol bays usable year-round. There are still a few low spots where water collects, but overall it is much better surface in the winter months.

With the pistol bay work done we've started doing some erosion repair on the Rifle Parking areas. Over the next few months we will continue adding gravel in each Rifle Parking area and the access road. There may be isolated rifle range closures while we move gravel in, we will update the calendar so make sure you check the calendar before unloading all your equipment.





While all this was going on we had 13 new range tables built for the pistol buys. Member Ralph B crafted these monsters and dropped them off to be painted. Thank You to Steve P, he made a nice donation that we used to buy the paint to finish and seal the tables. Once painted we added the rubber tops and yellow trim. These things are heavy, if you need to move one you might need some help. They were built to be used but Please don't drag them around or use them as target stands.



---

## **Reminder - We Don't Print Waivers**

*We mentioned this at your orientation, YOU are responsible for making sure any Guest you bring on the property has a completed Waiver in their possession, and any Guest that is shooting must have Paid the Daily Use Fee prior to entering the range.*

Beginning June 1st, there will be no warnings about waivers, if you have a guest without a waiver or paid fees, YOU will lose range access for 60 days. Printing waivers is an unnecessary expense for the club, if we have to return to printing waivers and keeping them onsite, there's only One place we recover that cost, increased membership fees.

Rule 21) GUESTS / GROUPS - Members are limited to bringing two (2) non-members as guests per day. A fee of \$5.00 per guest per day will be due prior to range use by a guest. Liability waivers and range safety rules and policies acknowledgement are required for guests to use the range. Members are responsible for their guests. The guest must be on the same firing line/bay as club member. No groups of five (5) or more are allowed, including members and guest, without Board approval.

**At the April 2026 GCRGC BOD meeting, the board and officers made a change to GCRGC Rule # 10 and we will allow the use of Member Owned Steel in Rifle 2, Rifle 3, and Rifle 4 again. All Steel must be placed at least 25 Yards from the Concrete Shooting Benches. This distance should keep any Ricochets or fragments from returning into a neighboring bay and injuring another member.**

**Rifle 1 remains unchanged, Any Member Owned Steel in Rifle 1 Must be placed At Least 75 Yards from the front of the Concrete Shooting Benches**

Revised and Update Rule 10) TARGETS - Only paper, cardboard and approved steel targets allowed. Steel targets placed on the Rifle Bays 1 must be at least 75 YARD from the front of the shooting benches. Steel Targets placed in Rifle 2, 3 or 4, must be at least 25 yards from the shooting benches. Steel "SPINNER" Targets are Prohibited on all GCRGC bays. Remove all targets and target frames brought to the range when finished shooting. Do not use glass bottles, electronics, scrap metal, food items, ground targets or rocks as targets. Steel targets will not be engaged within thirty (30) feet.